

Cable Kit 3022/02 Interface 3009/16

Mimer SoftRadio - Motorola MotoTrbo DM360X/DM460X

(DM4600 AKA: XPR5550, XPR5580, DGM5500, DGM8500, XiR M8660, XiR M8668)

(DM3600 AKA: XPR4500, XPR4550, XPR4580, DGM6100, XiR M8260, XiR M8268)

Also works with the e-versions.

Remote functionality

This cable kit will together with the Mimer Network Interface give remote control of the radios audio and PTT functions and it will present a full function Virtual Control Head on the operator PC.



Radio firmware

We recommend the use of 2.30.01 or later in DM460X radios.
All versions of firmware in DM360X works.

There is a setting in the Network Interface to choose between DM360X or DM460X radios. See further down.

Cable Kit

The red and black wires shall be connected to 12VDC, red is positive.

The network interface consumes max 0,3A.



Cable kit 3022/02 for MotoTrbo

Please note

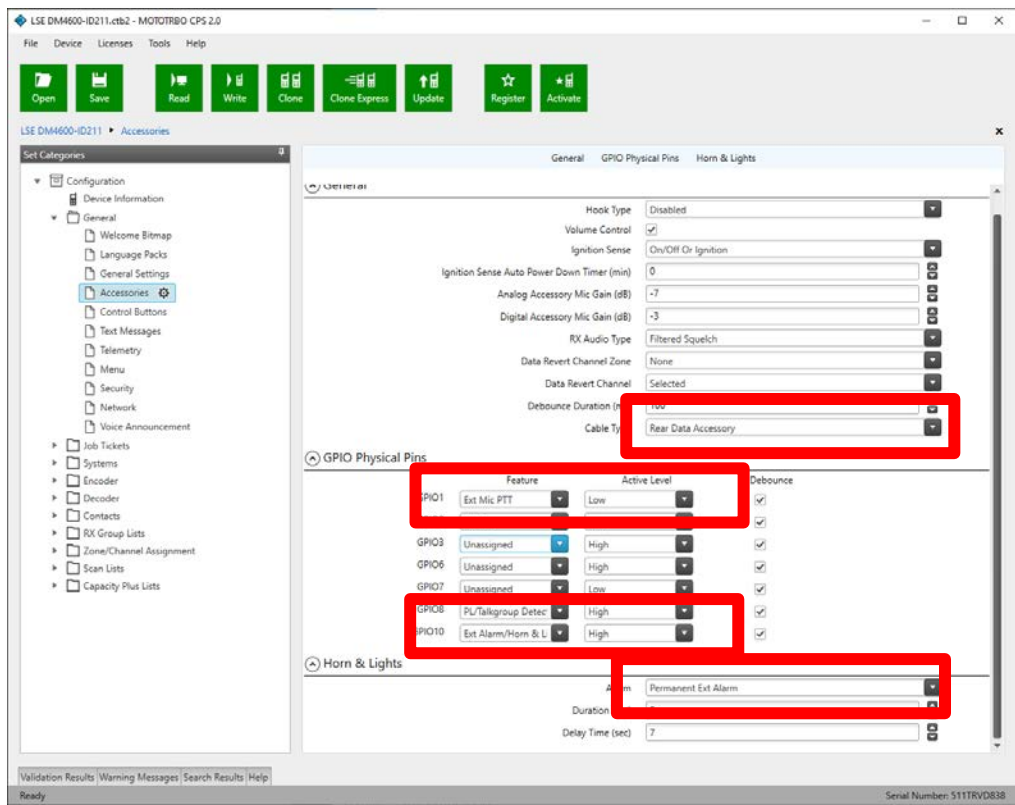
The remote function cannot work at the same time as the radios programming cable is attached. Disconnect the programming cable before connecting the Network Interface. And then reboot the radio.

Radio settings

One setting has to be changed in the radio for Mimer to get access. All other settings are default but might need to be checked if something is not working as intended.

Cable Type

The setting to change is “Cable Type” on the Accessories page:
Set to **“Rear Data Accessory”**



Microphone

GPIO1 Pin #17 should be set to Ext Mic PTT, active Low.

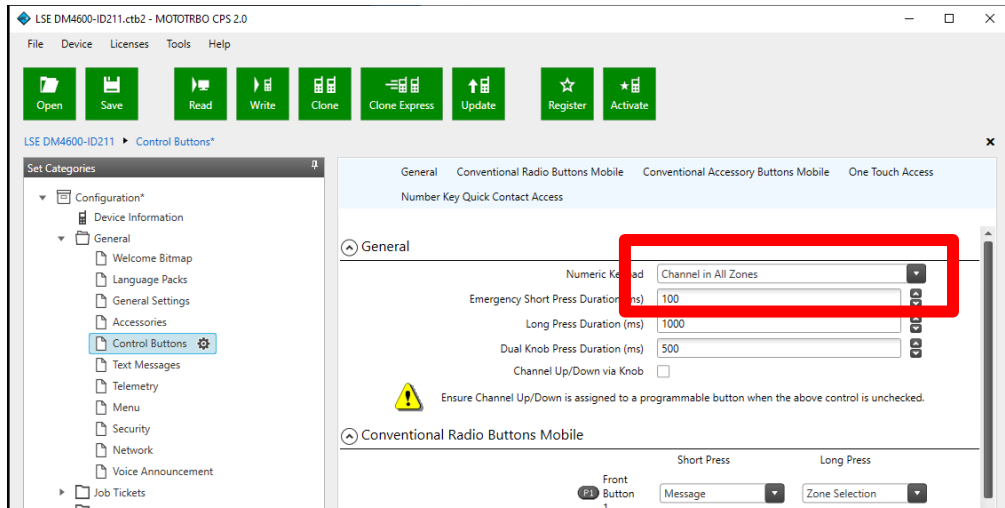
External Alarm

GPIO10 Pin #26 should be set to Ext Alarm, High, and Alarm to “Permanent Ext Alarm” if you want Mimer to react to selective calls.

Keypad use

The keypad on the Virtual Control Panel, on DM460X, can be used for channel change. This is practical if you have many channels and don't want to use the arrows to step up/down.

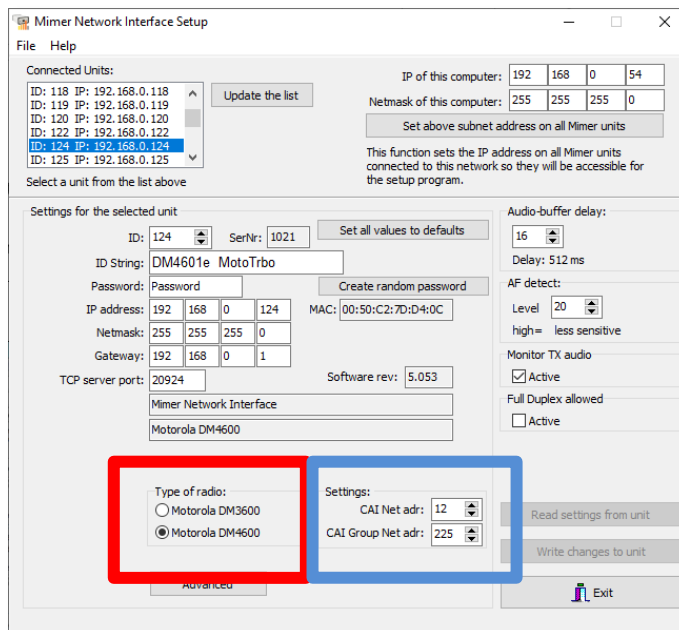
Program "Numeric Keypad" to "Channel" under the "Buttons" menu.



Interface settings

In "Mimer Network Interface Setup" there are two extra settings for MotoTrbo radios.

- You need to set the type of radio you are connecting, the old DM3600 series or the new DM4600 series.
- If you are using a non-default type of DMR network, you also need to set the CAI Network Address. This is very seldom needed.



Virtual Control Head functions

